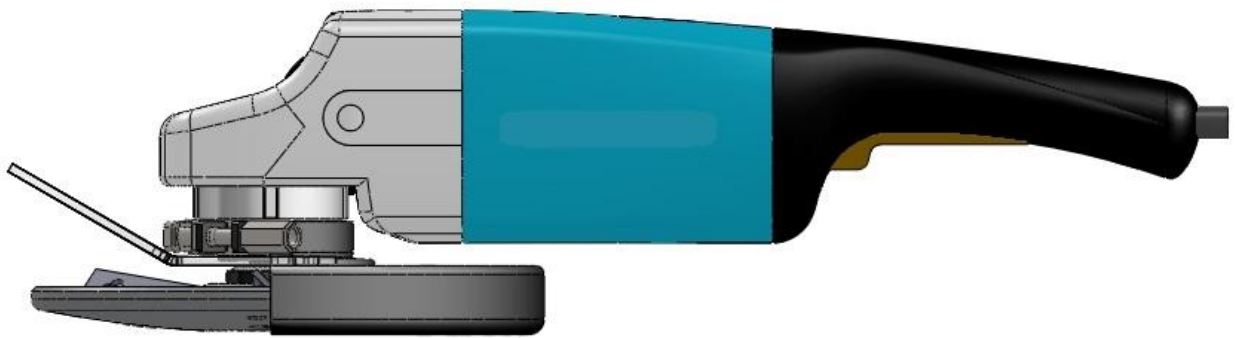


**USER & SAFETY MANUAL**

**LOG PEELER TOOL D220 SPH / PLR**



**ATTENTION! The cutting blades of this power tool are very sharp!**

**We suggest you read this information before you begin to use this product. To use this product safely, always follow general requirements and safety rules!**

## GENERAL REQUIREMENTS AND RECOMMENDATIONS

1. Usable 9'' (230mm) angle grinder's rated power must be at least 2000 W (watts), optimal spindle speed is 6000 min<sup>-1</sup>, max spindle speed 6600 min<sup>-1</sup>.
2. The **log peeler disc** (figure 1, pos. 1) must be fixed to the angle grinder with standard (22.23 mm, 7/8'') disc flange (figure 2, pos. 5) and clamp nut M14 (figure 2, pos. 4). Ensure that the clamp nut's **step edge** is directed towards the tool's fixing hole. Clamp nut must be tightened with a special angle grinder's wrench, but it is important to use gloves, because there is a risk to injure operator's hand against the cutting blades, when the wrench should be accidentally slipping away. Please be very careful!
3. Always disconnect the tool from the power source when changing **cutting blades** (figure 1, pos. 2) or when performing any general maintenance activities (such as adjusting or cleaning).
4. Handle cutting blades with care. After sharpening, the blades can injure hands – therefore always use gloves! Sharpening information is shown in figure 4 and figure 5.
5. Cutting blades must be adjusted according to processing requirements - the thicker bark of log requires to adjust larger cutting depth (up to 3.0 mm), the wood surface finishing needs adjustment of blades to 0.5...1.0mm. Make sure that the cutting blades are equally adjusted (figure 3).
6. Ensure that cutting depth and **screws M6x12 ISO7380** (figure 1, pos. 3) are tightened. Screws must be tightened up to the torque **9.0 Nm (79.7 In. Lb. or 6.64 Ft. Lb.)**. Please use ¼'' Torx T30 screwdriver bit, which included to the set of log peeler tool.
7. It is not allowed to start the angle grinder with not correctly tightened cutting blades!
8. If there are some deviations from the normal product operation (strange noise, vibration, loose cutting blade), **you must stop the machine immediately!**

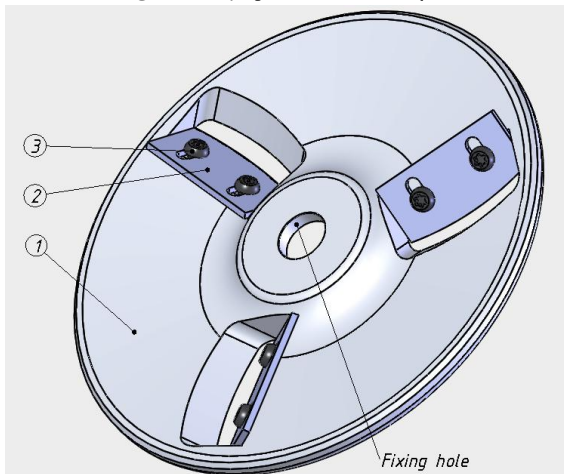


Fig. 1 Complete log peeler tool

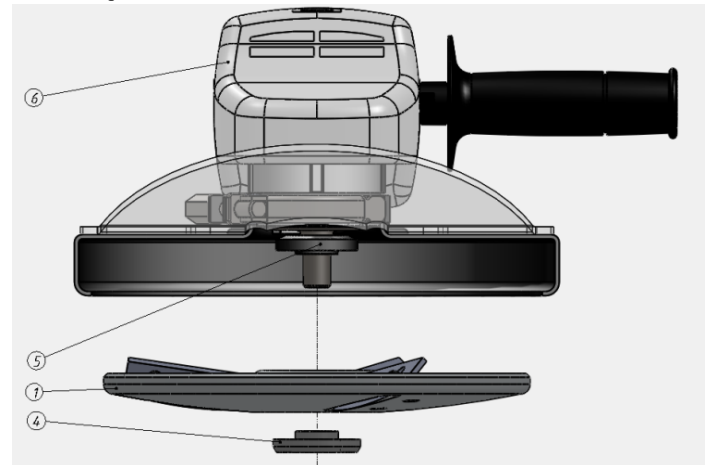


Fig. 2 Mounting scheme of log peeler tool D220 SPH / PLR to the 9'' (230 mm) angle grinder

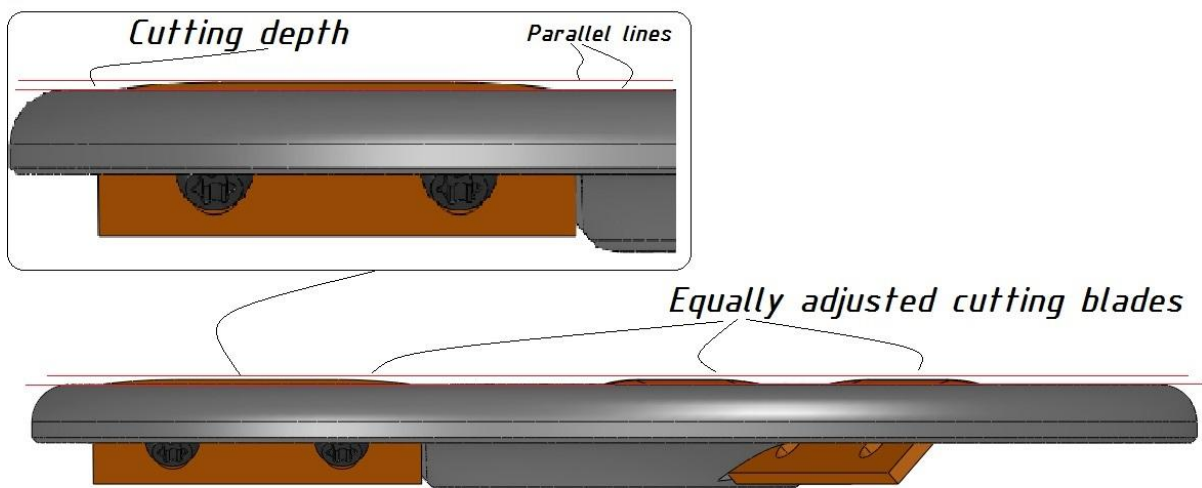
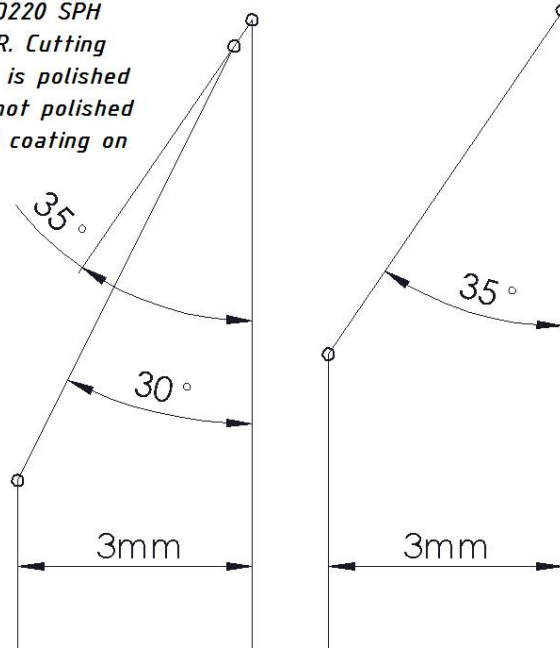


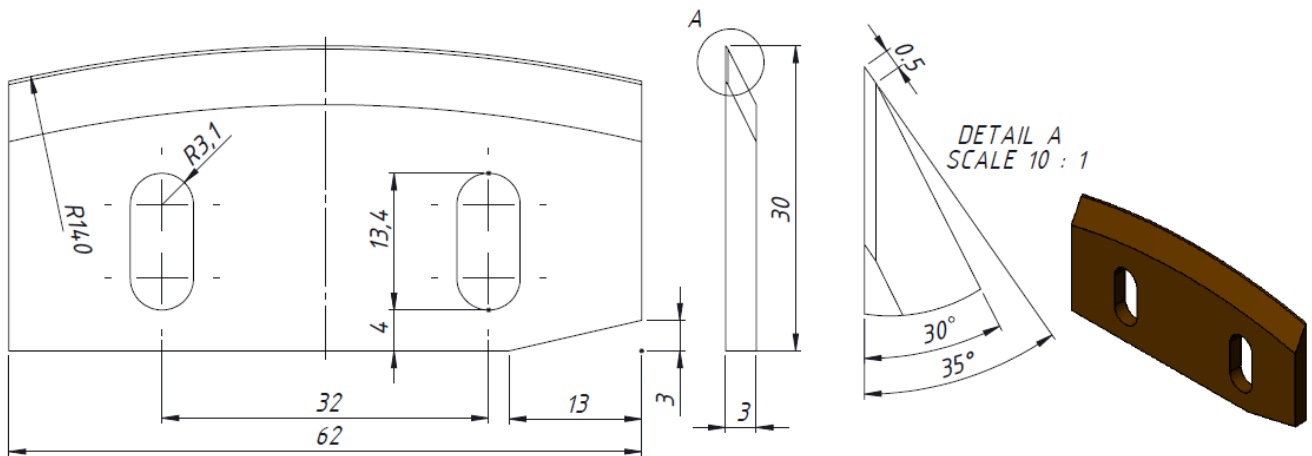
Fig. 3 Principle of peeler tool D220 PLR cutting blades adjusting. The same principle applies for model D220 SPH

Left side. Original LAHZIT® double-angle sharpening angles for log peelers D220 SPH and D220 PLR. Cutting blades bevel is polished and face is not polished (special ST-1 coating on face side).

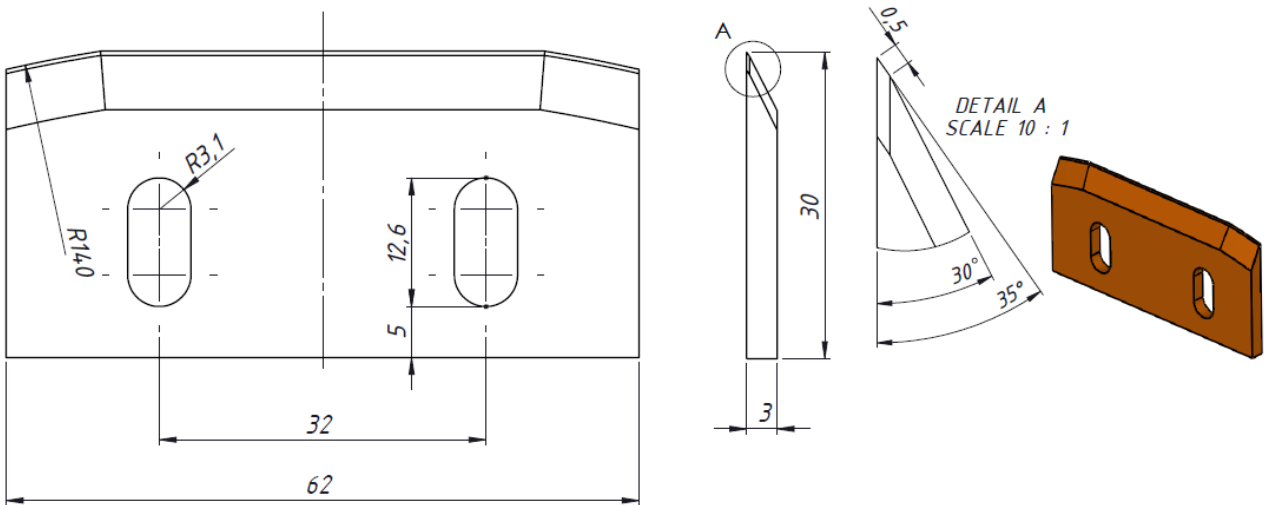
Right side. Simple sharpening method and angle. This way to sharpen doesn't give best durability for blades.



**Fig. 4** Sharpening angles for log peeler D220 SPH / PLR blades



**Peeler D220 SPH blade**

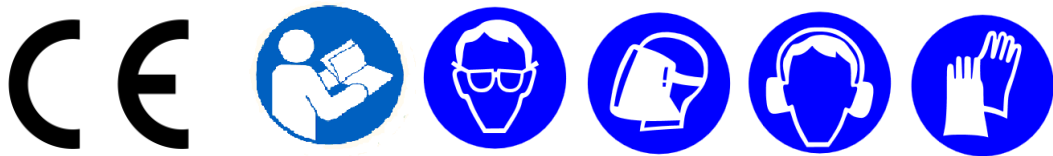


**Peeler D220 PLR blade**

**Fig. 5** Dimensions of peeler D220 SPH / PLR cutting blades

## SAFETY RULES

- Always start peeling (debarking) operation with rotating peeler disc.
- During operation always hold the angle grinder securely with two hand.
- Do not remove workpiece or cut-off pieces from tool during a cut while the peeler disc is rotating.
- Do not leave tool until it comes to a complete stop.
- Wear proper eye/ear protection. Everyday eyeglasses have only impact-resistant lenses; they are not safety glasses. Also use a face or dust mask if log peeling operation is dusty. Visitors should wear the same protection.
- We recommend to use special designed extra protective cover Lahzit® PC-D230, which can be ordered from our company's webshop [www.lahzit.ee](http://www.lahzit.ee).
- Use proper work gloves and anti slip security shoes
- Avoid wearing clothing with loose sleeves.
- When tool is not in use, please store it safely in original plywood box in dry storage. We recommend to keep peeler's blades sharp and to process them with conservation oil. This helps to prevent corrosion damages.



Producer and contact:

**LAHZIT OÜ**

**Registration code 12614575**

**Vana-Koidu st 4, Elva EE-61507, Estland / Estonia**

**+3725105184**

**[toomas.laatsit@lahzit.ee](mailto:toomas.laatsit@lahzit.ee)**

**[www.lahzit.ee](http://www.lahzit.ee)**